



Lagniappe

January 2025 • Volume 49, No. 1

LDWF Calling Upon Anglers to Help Biologists Collect Striped Bass Samples

The Louisiana Department of Wildlife and Fisheries (LDWF) is looking for participants to join LDWF's Striped Bass Collaborative Anglers Project (SBCAP) to help biologists better understand the striped bass population in the Lake Pontchartrain and Pearl River basins.

Striped Bass

- A** Stripes distinct, several extend to tail
- B** Body slender, less than 1/3 length
- C** Has two, distinct tooth patches near the midline towards the back of the tongue

LDWF needs tissue samples from the striped bass you catch. Data can be collected and submitted from harvested or released catches in two ways:

- Through a fin clip kit ordered from LDWF
- Or by having LDWF collect your cleaned carcass

Data will be analyzed by LDWF biologists for age determination (otoliths) and genetic origin (Gulf Strain, Atlantic Strain, Natural/Stocked).

For more information on the project, a striped bass identification guide, to request a fin clip kit or report a sample for collection: visit www.wlf.louisiana.gov/sbcap or call Jonathan Winslow at (985) 847-2422.

White Bass

- A** Stripes faint, only one extends to tail
- B** Body deep, more than 1/3 length
- C** Has one tooth patch near the midline towards the back of the tongue

Yellow Bass

- A** Stripes distinct, broken above anal fin
- B** Color - silvery yellow
- C** Dorsal fins joined
- D** Does not have a tooth patch near the midline towards the back of the tongue

Hybrid Striped Bass

- A** Stripes distinct, several extend to tail
- B** Body slender, less than 1/3 length
- C** Has two, distinct tooth patches near the midline towards the back of the tongue

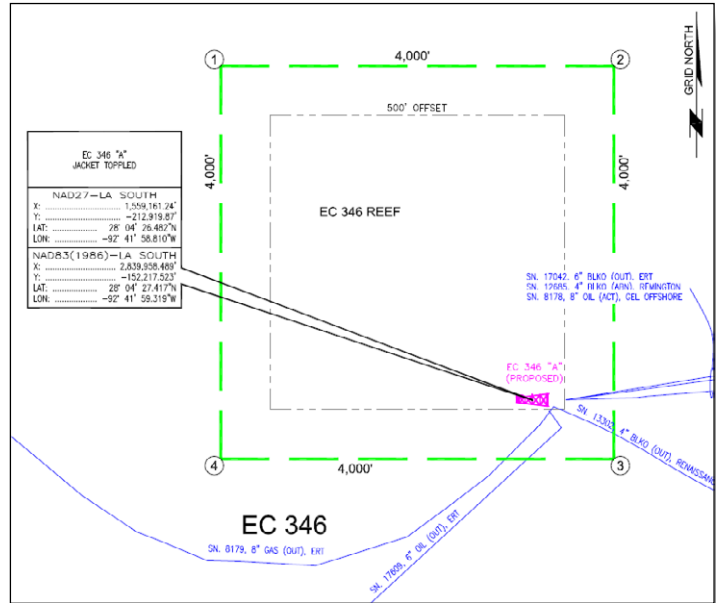
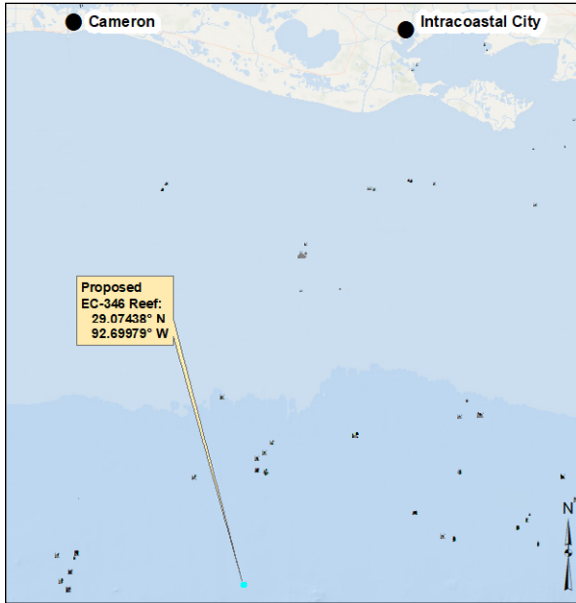
White, Striped and Hybrid Striped Bass courtesy of Duane Raver
Yellow Bass courtesy of Encyclopedia Britannica



The Louisiana Artificial Reef Council Conditionally Approved a Proposed East Cameron 346 Special Artificial Reef Site

At the Nov. 26 meeting of the Louisiana Artificial Reef Council (council), Talos Energy proposed the creation of the East Cameron 346 (EC-346) Special Artificial Reef Site (SARS).

If the SARS gets final approval, the EC-346 “A” platform jacket will be reefed in place at its current position (28.07438° N, 92.69979° W) in the Gulf of Mexico, about 100 nautical miles offshore.



The Spring Women’s Fishing 101 Workshop Application Period is Open

Spring Workshop Dates:

- Saturday, Feb. 8, 2025 – LDWF Waddill Wildlife Refuge, Baton Rouge. Application period open Dec. 9, 2024 – Jan. 5, 2025
- Saturday, April 5, 2025 - LDWF Waddill Wildlife Refuge, Baton Rouge. Application period open Feb. 10, 2025 – March 9, 2025



Please remember that each Women’s Fishing Workshop will be limited to 15 participants per date. Participants must be first-time attendees and may only attend one workshop. Selected registrants will be notified via email prior to each workshop. Applications will not be reviewed until after the application period has closed.

While not required to register, participants must possess a valid Louisiana fishing license to participate in the workshop. To purchase a fishing license, visit www.wlf.louisiana.gov/licenses-and-permits.

The Women’s Fishing Workshops are hosted in conjunction with the Louisiana Wildlife and Fisheries Foundation (LAWFF). The foundation was formed to help expand and support LDWF education and research programs with additional resources developed through its own facilities. Encouraging support for LDWF programs is the major focus of the foundation, accomplished by connecting people and businesses with Louisiana’s natural resources. For more information, visit www.lawff.org.

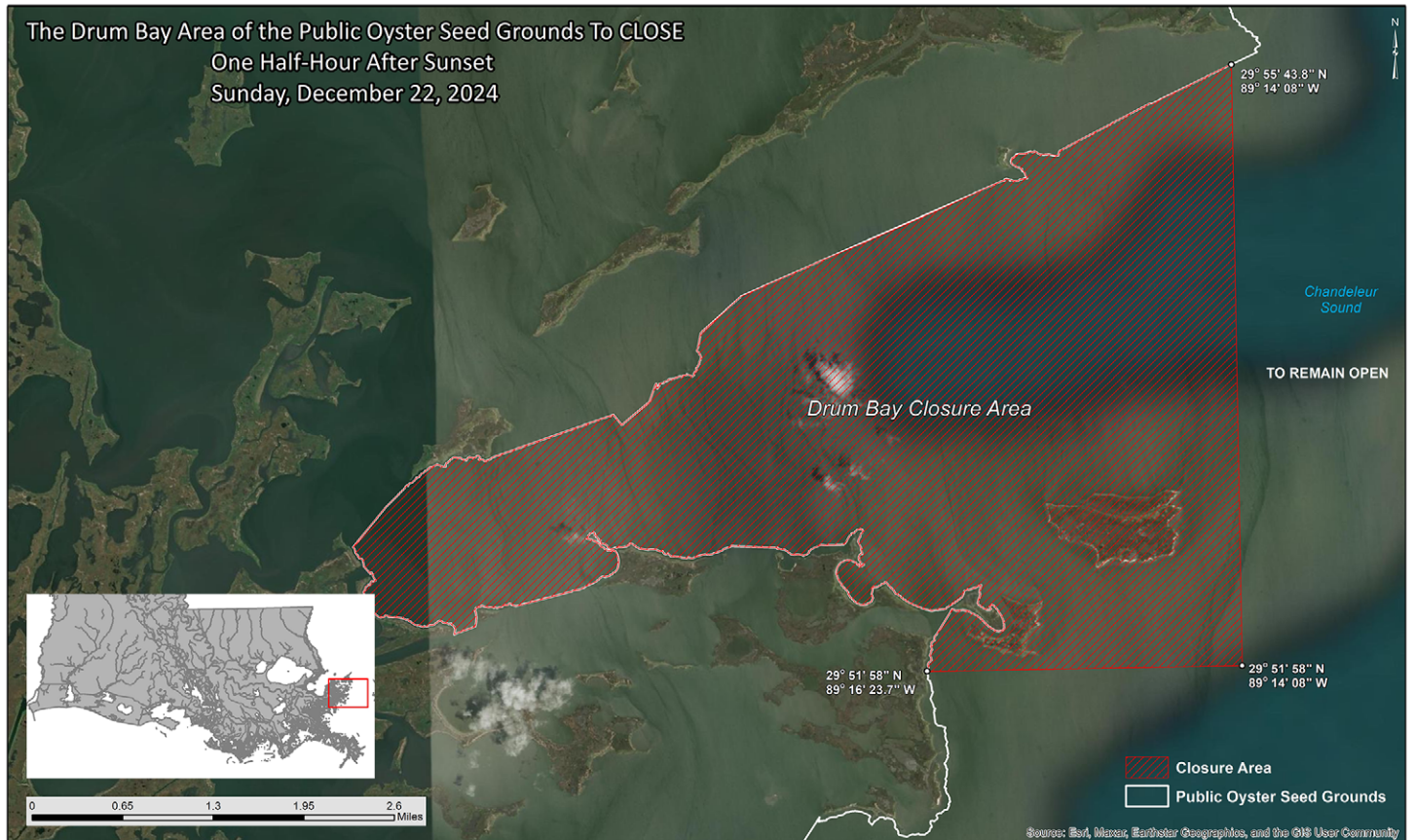
Women’s Fishing 101 Workshops are funded by the Sport Fish Restoration Fund, a USFWS grant program that provides grant funds to the states, the District of Columbia and insular areas fish and wildlife agencies for fishery projects, boating access and aquatic education.



LDWF to Close Oyster Harvest in a Portion of the Public Oyster Seed Grounds East of the Mississippi River

The Louisiana Department of Wildlife and Fisheries (LDWF) closed oyster harvest in a portion of the public oyster seed grounds east of the Mississippi River, north of the Mississippi River Gulf Outlet, and within the Louisiana Department of Health (LDH) Shellfish Harvest Area 3, one half-hour after sunset on Sunday, Dec. 22, 2024, as follows:

- That portion of the public oyster seed grounds within the Drum Bay area, St. Bernard Parish, north of a line of latitude at 29 degrees 51 minutes 58 seconds N, and west of a line of longitude at 89 degrees 14 minutes 08 seconds W.



Recent biological sampling by the department indicates the reefs in this portion of the public oyster seed grounds are experiencing a localized mortality event. Additionally, harvest surveys by the department indicate these reefs are also receiving concentrated harvest pressure. Therefore, the closure is necessary to protect the remaining oyster resource, allowing growth of that resource for future harvest opportunities. Continued commercial harvest could threaten the long-term sustainability of remaining oyster resources in these areas. Protection of these remaining oyster resources from injury is in the best interest of these public oyster seed grounds.

The commission authorized Louisiana Department of Wildlife and Fisheries secretary Madison D. Sheahan to take emergency action to close areas on an as-needed basis based on biological data or if enforcement problems are encountered. The secretary is also authorized to take emergency action to reopen areas previously closed if the threat to the resource has ended and to open areas if substantial oyster resources are located.

Public notice of any opening, delay, or closure of a season will be provided at least 72 hours prior to such action unless the Louisiana Department of Health orders such closure for public health concerns.

For more information, contact Robert Caballero at (504) 286-4054 or rcaballero@wlf.la.gov.

Louisiana Regional Fisheries Summit Meeting Announcement

The Louisiana Regional Fisheries Summit: Freshwater Impacts in the Pontchartrain Basin for the commercial and recreation-for-hire fishing industries will be Tuesday, March 25, at the Slidell Municipal Auditorium, 2056 Second Street. Doors to the free event will open at 9 a.m., and the Summit will conclude at 3:45 p.m.

Topics at the Summit will include:

- Water Quality Impacts
- Restoration and Freshwater
- Fisheries Resilience
- Disaster Aid Relief

Lunch will be provided and there will be an opportunity to learn about recent research conducted in the Pontchartrain Basin. Registration is requested. To register visit <https://forms.gle/emTopkGAs1yoZjy29>. Or for more information, contact Carol Franze (cfranze@agcenter.lsu.edu) or Jeffrey Plumlee (jplumlee@agcenter.lsu.edu).

The Summit is hosted by Louisiana Sea Grant and the LSU AgCenter.



The graphic features a central banner with the text "LOUISIANA REGIONAL FISHERIES SUMMIT" in large, blue, outlined letters. The banner is flanked by silhouettes of various aquatic life: a crab, a shrimp, a fish, and a crawfish. Below the banner, the text "Freshwater Impacts in the Pontchartrain Basin" is displayed in a bold, black font. A blue box contains the date and time: "Save the Date: March 25, 2025 9am to 3:45pm". Below this, it says "Registration to Follow" and "For more information contact Carol Franze: cfranze@agcenter.lsu.edu". At the bottom, there are three logos: "Sea Grant LOUISIANA" with a bird icon, the "LSU AgCenter" logo with "Research • Extension • Teaching" below it, and a small map of Louisiana with "Slidell, LA" marked. The address "Slidell Municipal Auditorium, 2056 Second Street, Slidell, LA 70458" is printed at the very bottom.

LDWF Fishing Course Series Announces Rainbow Trout Fishing Dates

The Louisiana Department of Wildlife and Fisheries (LDWF) annual Get Out & Fish! rainbow trout stockings are quickly approaching. To give Louisiana anglers an improved chance at landing this unique catch, the LDWF Fishing Course Series program is once again, offering the Beginner Rainbow Trout Fishing Course. Join LDWF biologists as they delve into the best tactics, tackle, and bait to successfully reel in your own rainbow.

The Beginner Rainbow Trout Fishing Course will be geared towards all skill levels, including beginner, casual or experienced anglers. Participants will learn stocked rainbow trout behavior, targeting tactics, equipment overview, bait selection and basic rigging followed by an hour of fishing with LDWF staff.

Each two-hour class will be open to all ages and limited to 10 participants, with a waitlist option. Equipment will be provided, but participants are also encouraged to bring their own gear. All in attendance will take home a package of informative material, starter tackle, and bait, courtesy of Magic Bait and TakeMeFishing.org. Anglers 18 and older must possess a Louisiana Basic Fishing Season or Hook and Line license, and anglers under 16 must be accompanied by an adult. Licenses can be purchased online at www.louisianaoutdoors.com. Eight courses will be offered at Get Out & Fish! ponds across the state.

To register for one of the FCS courses, visit Louisianaoutdoors.com/events and select the event type “Fishing Ed” to see all available FCS courses. If you need assistance registering, please contact outreach@wlf.la.gov or call Joshua Porter (225) 763-3540. For more information on the Fishing Course Series and Get Out & Fish! programs, please visit wlf.louisiana.gov/page/fishing-workshops and wlf.louisiana.gov/page/get-out-and-fish. Rainbow trout stocking dates will be posted on the website in early January.



The Department of Wildlife and Fisheries is charged with managing and protecting Louisiana’s abundant natural resources. For more information, visit www.wlf.la.gov, on Facebook at www.facebook.com/ldwfffb or follow on Twitter @LDWF.

The Fishing Course Series is hosted in conjunction with the Louisiana Wildlife and Fisheries Foundation (LAWFF). The LAWFF was formed to help expand and support LDWF education and research programs with additional resources developed through its own facilities. Encouraging support for LDWF programs is the major focus of the Foundation, accomplished by connecting people and businesses with Louisiana’s natural resources. For more information, visit www.lawff.org.

The Fishing Course Series is funded by the Sport Fish Restoration Fund, a USFWS grant program that provides grant funds to the states, the District of Columbia and insular areas fish and wildlife agencies for fishery projects, boating access and aquatic education.

Gulf Council Hosts Virtual Meeting to Gather Input on Recreational Reef Fish Management

As part of its Recreational Initiative, the Gulf of Mexico Fishery Management Council is hosting a virtual Public Engagement Session from 6:00 – 9:00 PM EST on Jan. 16, 2025.

The Gulf of Mexico Fishery Management Council’s Recreational Initiative is an effort to evaluate past and current recreational reef fish management strategies and explore potential innovative management approaches that could be applied in the future. The effort will focus on five species as examples that might be applied to other species: red snapper, red grouper, gag grouper, greater amberjack and gray triggerfish.

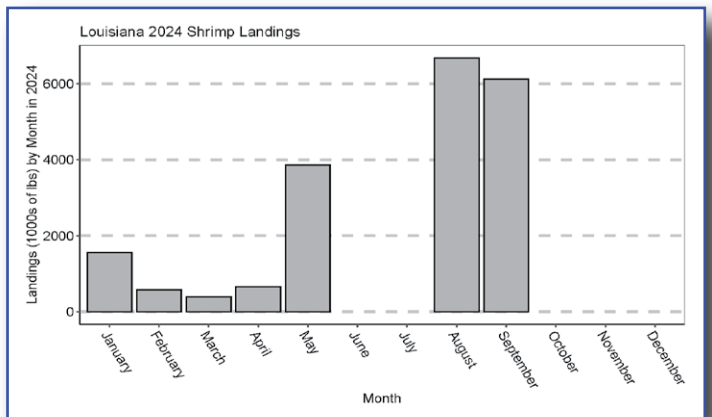
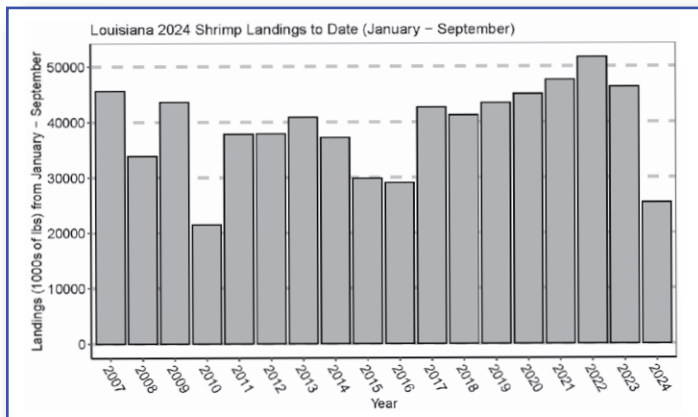
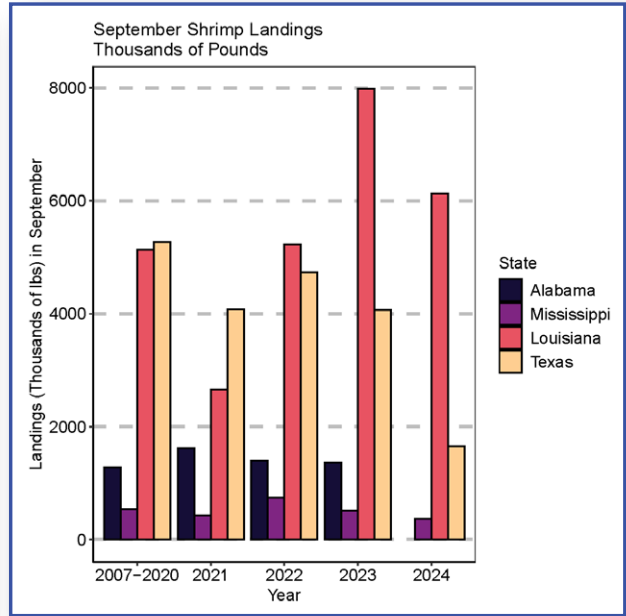
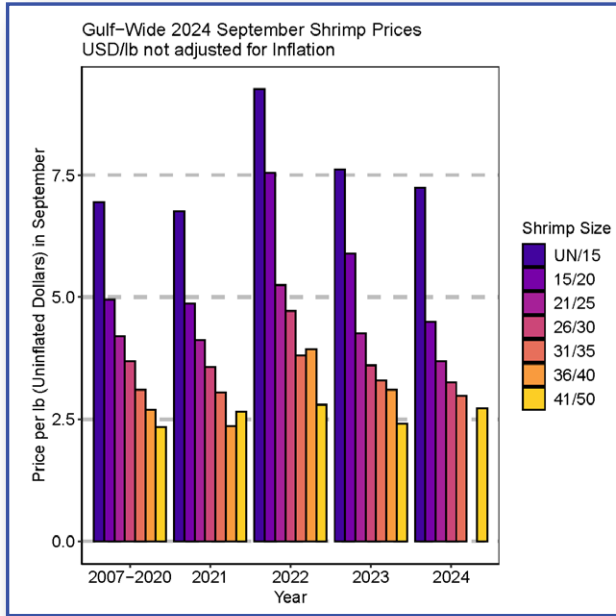
The primary work of the Recreational Initiative will be performed by a working group comprised of individuals representing key Gulf recreational fishing interests, including private anglers, for-hire operators, associated marine industries and advocates. A public engagement session will be held after each working group meeting to share meeting outcomes and offer the public an opportunity to provide insight and input. This second public engagement session will focus on reviewing the efficacy of recreational management measures, including accountability measures, applied to the five key species overtime.

More information on the council’s recreational initiative, including links to join the Public Engagement Session, can be found on the recreational initiative webpage.



Louisiana Shrimp Watch

The shrimp watch data for the January issue includes data through September 2024. All landing data is based on trip ticket data provided by Gulf States Fisheries Commission and no estimations have been made.



The Gumbo Pot

Crawfish Dressing*

Recipe courtesy of Ms. Sarah's Country Kitchen

From Ms. Sarah: I wanted to bring a little Cajun flair with me to our holiday dinner table. This stuffing, or dressing, is very much Cajun! This can also be used as stuffing for crabs, a topping for fish, or even put in the turkey. Please reach out to the editor on suggestions for recipes or ingredients to use in future editions. We are always looking for feedback and improvement!



Ingredients:

- 1 lb cooked crawfish tails
- 1 lb sliced and quartered andouille sausage
- 2 diced celery stalks
- 1 tbsp minced garlic
- 1 diced red bell pepper
- 1 diced onion
- 12 oz. cornbread dressing
- 2 eggs
- 1 tbsp Cajun seasoning
- 6 tbsp butter
- 1 (14.5 oz.) can chicken broth

Directions:

1. Preheat oven to 350 degrees. Heat a large skillet over medium heat, add andouille and cook until brown on both sides. Remove sausage from pan. Add diced onion, bell pepper, celery, and minced garlic to pan. Cook until the onion is soft and almost translucent.
2. Remove the skillet from heat. Add the sausage back to the skillet. Add the butter, crawfish, and cornbread dressing, mixing lightly to combine ingredients. In a separate bowl, crack the eggs and whisk in the Cajun seasoning until mixed completely. Pour the eggs into the skillet and stir together all ingredients.
3. Spray a 9" x 11" baking dish with cooking spray. Pour the dressing mixture into the pan. Open the can of chicken broth and drizzle the broth over the entire dressing until empty.
4. Bake the dressing for 45 minutes.
5. Enjoy!

*Total time: 60 minutes, Feeds 6-8 people.



For more information, contact your local extension agent:

Thu Bui

Marine Agent
St. Mary, Iberia and Vermilion Parishes
Phone: (337) 828-4100, ext. 300
tbui@agcenter.lsu.edu

Thomas Hymel

Marine Agent
Iberia, St. Martin, Lafayette, Vermilion, St. Landry and Avoyelles Parishes
Phone: (337) 276-5527
thymel@agcenter.lsu.edu

Carol D. Franze

Marine Agent
Southeast Region
Phone: (985) 875-2635
cfranze@agcenter.lsu.edu

D. Jordan Poole

Marine Agent
Cameron and Calcasieu Parishes
Phone: (337) 905-1318
dpoole@agcenter.lsu.edu

Haley Gambill

Marine Agent
Terrebonne and Lafourche Parishes
Phone: (985) 873-6495
mgambill@agcenter.lsu.edu

Dominique Seibert

Marine Agent
Plaquemines and St. Bernard Parishes
Phone: (504) 433-3664
dseibert@agcenter.lsu.edu

Albert 'Rusty' Gaudé

Marine Agent
Jefferson, Orleans, St. Charles and St. John Parishes
Phone: (504) 433-3664
agaude@agcenter.lsu.edu

Mark Shirley

Marine Agent
Jefferson Davis, Vermilion, Acadia, St. Landry, Evangeline, Lafayette, Beauregard and Allen Parishes
Phone: (337) 898-4335
mshirley@agcenter.lsu.edu

We would like to hear from you! Please contact us regarding fishery questions, comments or concerns you would like to see covered in the Lagniappe. Anyone interested in submitting information, such as articles, editorials or photographs pertaining to fishing or fisheries management is encouraged to do so.

Please contact Lagniappe editor Jeffrey Plumlee at jplumlee@agcenter.lsu.edu

Jeffrey Plumlee

Fisheries Specialist
Louisiana State University AgCenter
334 Renewable Natural Resources Building
Baton Rouge, LA 70803
Phone: 225-578-4102
Email: jplumlee@agcenter.lsu.edu

Be sure to visit the *Lagniappe* blog for additional news and timely events between issues.
<https://louisianalagniappe.wordpress.com/>

Lagniappe Fisheries Newsletter

Editor: Jeffrey Plumlee

Web coordinator: Melissa Castleberry

Copy editor: Roy Kron